

## What is the 7th Grade Design Challenge?

The *7th Grade Design Challenge* is a cross-curricular project that integrates New Jersey career and technology curriculum standards into the five major subject areas: physical education, science, math, social studies, and English. For this year's challenge, students will be designing and planning a theme park.

*Our theme park represents the seventh grade year with the "themed" lands representing the various areas of the curriculum.*

Ultimately the themed lands will represent the major areas of the Life Science and Ancient History curricula with English, Math, and Physical Education curricula weaving in and out of those themes in order to demonstrate the relationship and interdependence between all subjects.

We will also use this project to address a variety of technology and career standards from the N.J. Core Curriculum Standards. Students will develop internet research skills to locate useful information as well as use a variety of technologies such as Microsoft Publisher and PowerPoint to create products and presentations to communicate their designs for our theme park. Students will have the opportunity to identify their strengths, discover careers that reflect those strengths, and explore various careers using a Career Day format. This project will also focus on necessary life skills using Costa & Kallick's "*Habits of Mind*", which highlights several characteristics of what intelligent people do when they are confronted with challenges that don't have immediate solutions.

### CONTACT INFORMATION

All *7th Grade Design Challenge* information will be posted on the following staff member's websites. If you have any questions regarding the *7th Grade Design Challenge* please email the staff member who represents your child's team.

#### GREEN TEAM

Jim Ardoin	jardoin@prsdnj.org
Kathy Hurley	khurley@prsdnj.org

#### GOLD TEAM

Cathy Schaffer	cschaffer@prsdnj.org
----------------	----------------------

#### WHITE TEAM

Shannon Leek	sleek@prsdnj.org
Shari Wyckoff	swyckoff@prsdnj.org

#### Directions For Accessing Staff Websites:

- 1) Go to "pinelandsregional.org"
- 2) Move cursor to "Instructional"
- 3) Scroll down to "Staff Websites"
- 4) Slide cursor over to "JHS Websites"
- 5) Staff names appear alphabetically on the left side of the screen. Click on a name to see website.

#### A More Traditional Way To Contact The Design Team

296-3106

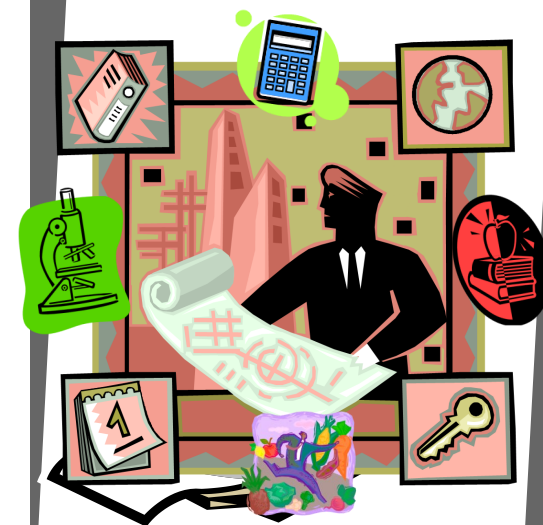
Jim Ardoin ex. 8668	Kathy Hurley ex. 8731
Shannon Leek ex. 8646	Cathy Schaffer ex. 8693
Shari Wyckoff ex. 8617	

Pinelands Junior High School  
590 Nugentown Rd  
Little Egg Harbor, NJ 08087  
(609) 296-3106



**Pinelands Junior High  
School**

# 7th Grade Design Challenge



**2010-2011  
Informational Guide**

## A Timeline By Marking Period

Below you'll find the specific projects that will be assigned for each marking period. In each of the first three marking periods, students will complete one challenge for two

subjects. Each subject will provide students with a rubric that will be used to assess that subject's requirements to earn a grade. Students will complete one project per subject in the fourth marking period. All project grades will be incorporated into student's individual marking period grades.

1st M.P.	<b>Life Science &amp; Ancient History</b>		<b>Math &amp; English</b>	
	<b>Pinelands History &amp; Ecology Field Guide:</b> Students will design a guided tour of a Pinelands Ecosystem (model or poster) and design a field guide that includes area history, pictures, and descriptions of the plants and animals found in their ecosystem.		<b>Career Project:</b> Includes an Introduction to Careers, Career Day Interviews, and a Comparison of Careers. Students will also complete a Career Tree Poster for presentation.	
2nd M.P.	<b>Life Science &amp; English</b>		<b>Math &amp; Ancient History</b>	
	<b>Cell Children's Book:</b> Students will create an informative children's book about cell scientists, parts & functions to be sold as merchandise in our theme park.		<b>Greek Timeline:</b> Students will develop a timeline of major discoveries and developments of the Greeks that will be used in the queue area of a Greek themed roller coaster.	
3rd M.P.	<b>Life Science &amp; Math</b>		<b>Ancient History &amp; English</b>	
	<b>Disease Presentation:</b> Students will develop a Power-Point presentation that describes how various diseases are transmitted and treated. Students will research disease statistics and display their statistics in tables and charts.		<b>Toga Day &amp; Roman Facebook:</b> Students will create a Facebook template to research the various groups of Romans and construct a persuasive essay that reflects the beliefs of their group of Romans.	
4th M.P.	<b>Math</b>	<b>English</b>	<b>Ancient History</b>	<b>Life Science</b>
	Design a themed roller coaster	Tri-Fold containing Employment Application, Park Logo & Slogan, and Reflective Essay	Design a history themed Museum, Restaurant, or Clothing/Costumes for Theme Park	Design a science themed attraction, ride or hotel for Theme Park

## Highlights of the 7th Grade Design Challenge

- Projects will count as test grades that will count toward individual marking period grades.
- Each marking period grade will count as 25% of the student's final average for that subject.
- No Mid-Term Exams or Final Exams—Students will be taking Quarterly Exams at the end of each marking period that will be worth 10% of the marking period grade.
- 4th Marking Period Projects will be displayed in each team's "Theme Park Preview Center" for students to tour at the end of the school year.
- Individual Teams will set dates for projects and quarterly exams as well as coordinate project due dates to avoid overlap of projects.

### Dates To Remember

- September 17: Design Challenge Kick-off
- September 23: Back To School Night
- October 8: Career Day

